

How to Create a Perler Beads Pattern with Paint Shop Pro 4

This article provides step-by-step instructions for converting an image to a Perler Beads project using the following software programs:

- Paint Shop Pro version 4.12
- Fuse Bead Image Converter
- Fuse Bead Pattern Designer

If you do not have Paint Shop Pro, please see the article titled “What program do you recommend for preparing images for Fuse Bead Image Converter?” at

<http://www.fusebeadsoftware.com/share/FAQs/tabid/58/Default.aspx>

Quick Steps

This section lists the basic steps for converting an image to a Perler Beads project. With practice, you’ll find the process of converting images to Perler Beads patterns quick and easy.

1. Copy/paste an image into Paint Shop Pro version 4.
2. Resize the image to 58 x 58 pixels or smaller.
3. Apply the PERLER1.pal color palette.
4. Save the image as a Portal Pixelmap (PPM) file.
5. Load Fuse Bead Image Converter and convert the PPM file to a FBP file.
6. Import the FBP file into Fuse Bead Pattern Designer.

For full details about the steps listed above, please continue to read this document.

Find an Image to Convert to a Perler Beads Project

One popular website for finding images that you can make into a Perler Beads project is Google Images. You can get to Google Images at <http://images.google.com/>.

Important: *The first step you should take at Google Images is to click the Preferences link and set the Safe Search Filtering setting to “Use strict filtering”. This will instruct Google Images to show only kid-safe images.*

At the Google Images website, type in a word that relates to the type of pictures you wish to find.



Figure 1 – You can find images at the Google Images website (and on millions of other websites!)

In the screen shown above, we’re searching for the words “clipart” and “santa”.

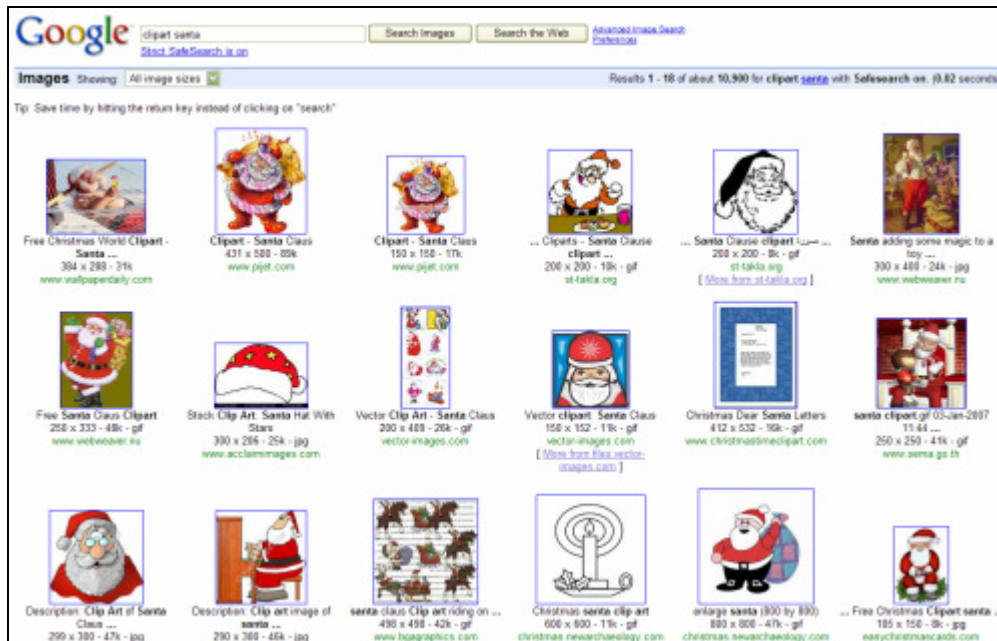


Figure 2 – Sample images in Google Images

Tip: Choose an image that does not contain a lot of detail or lots of different colors. Keep in mind that the Perler Beads company manufactures only 50 or so bead colors, so choose an image that you think will best translate to those bead colors. Only by trial and error with Fuse Bead Image Converter will you find an image that will make a great Perler Beads project. So try several images and choose the one that will make the best bead pattern.

Another Tip: Since a large Perler Beads project consists of only 58 pegs across and 58 pegs down (when you've connected four large square pegboards), you can find images that are already close to 58x58 in size. To find only small images, change the "Showing" setting at the upper-left corner of the Google Images screen to "Small images". You will then see a screen similar to below.



Figure 3 – Sample Images in the Google Images Website

Open (or copy/paste) Image in Paint Shop Pro

You can copy and paste an image from your Web browser into Paint Shop Pro. Alternatively, you can save the image from your Web browser to a file and then open the file with Paint Shop Pro.

To copy and paste an image from Internet Explorer, right-click the image and choose the Copy command. Then paste the image into Paint Shop Pro.



Figure 4 - Copy (or open) image in Paint Shop Pro

You can use the Zoom In feature of Paint Shop Pro to see the image closer and to make any initial changes to it.

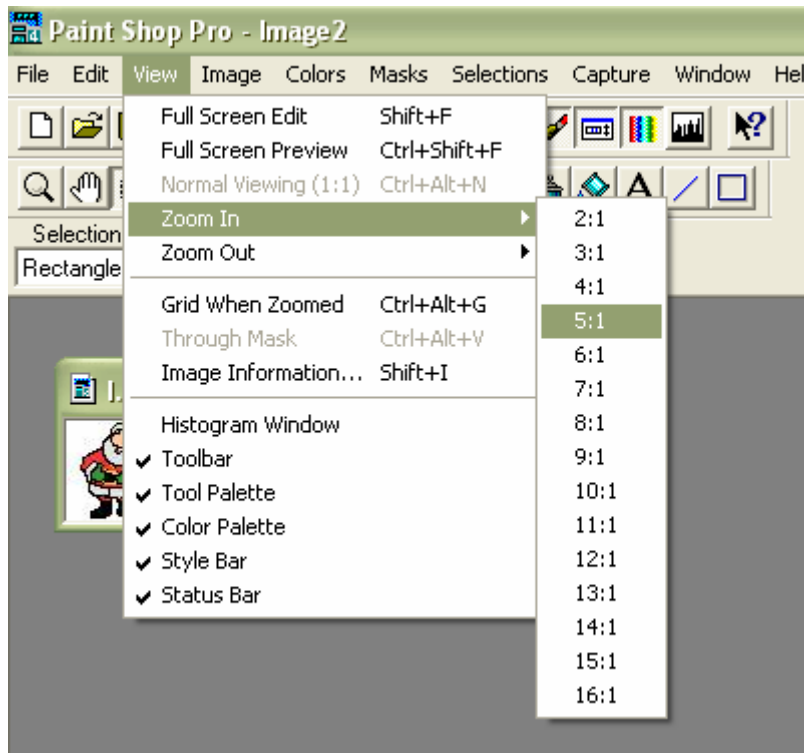


Figure 5 - Zoom In to See the Picture Closer (Optional)

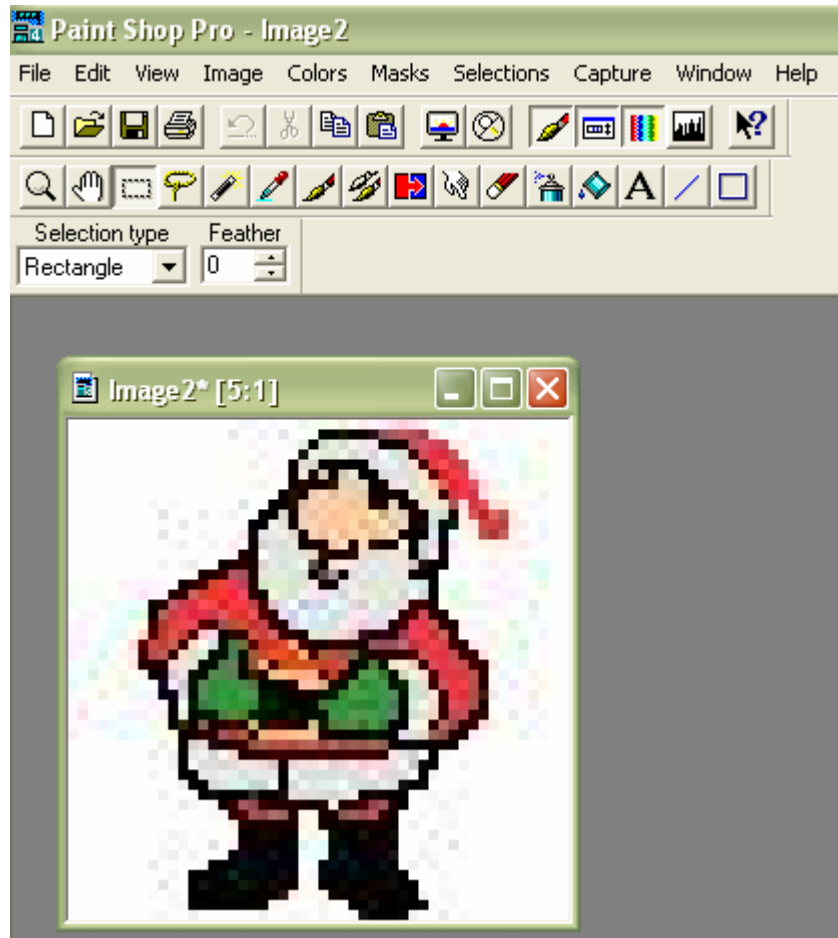


Figure 6 - Original image shown in Paint Shop Pro - Zoomed in

Resize the Image to 58 x 58 or Smaller

If your image is larger than 58 x 58 pixels (either in height or width) then you must resize the image so that its dimensions are less than or equal to 58 x 58. To resize an image in Paint Shop Pro 4, choose the **Resize** command from the **Image** menu. You can then enter any custom size you'd like as long as the number of pixels (height and width) are equal to or less than 58.

Load Color Palette (PERLER1.PAL)

Since the Perler Beads company has a limited number of bead colors, you must change the colors of your image to match the Perler Beads bead colors. To match Perler Beads colors, you must apply a special color "palette" to your image.

Your Fuse Bead Image Converter software includes a color palette file named PERLER1.pal. To apply the palette to your image, choose **Load Palette** from the **Colors** menu, locate PERLER1.pal (usually in C:\Program Files\FuseBead\), highlight it and click **OK**.

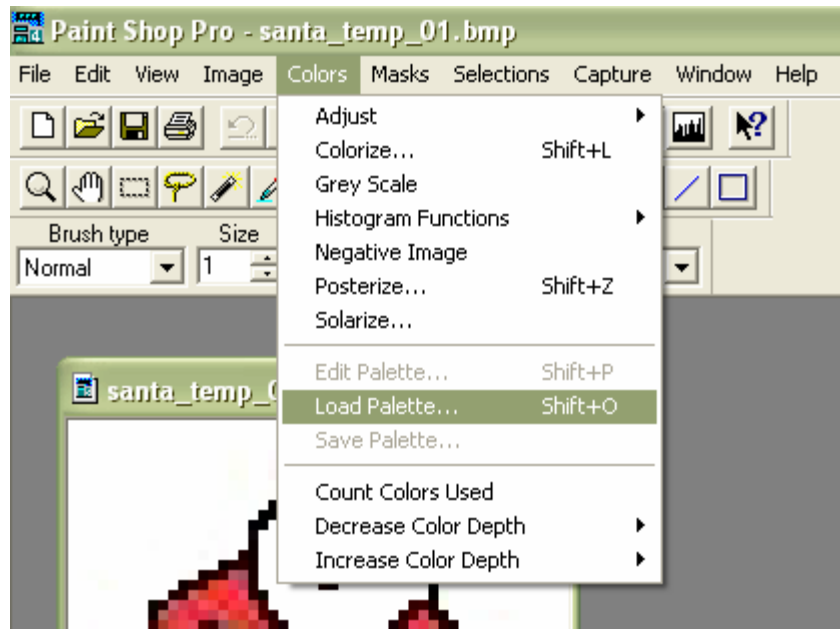


Figure 7 - Load the PERLER1.PAL palette

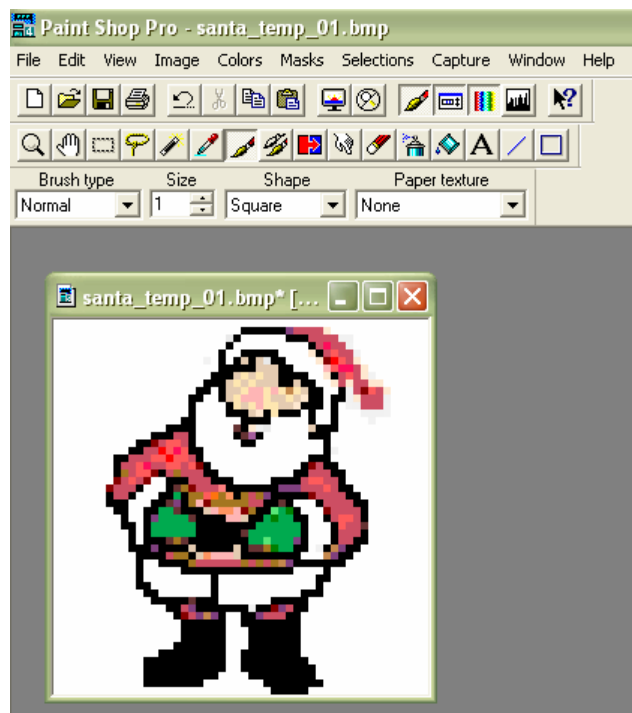


Figure 8 – This shows the Santa image with the Perler Beads color palette applied

Save Image to Portable Pixelmap Format

After you've resized the image (if necessary), applied the PERLER1.PAL color palette, and made any desired adjustments to the image, save the image into the Portable Pixelmap (PPM) file format. To save a file to the PPM file format, choose Save As from the File menu, choose a folder to save it to (e.g., C:\Program Files\FuseBead\), and give it a name (e.g., "SANTA1"). Next, choose "PPM – Portable Pixelmap" as the file type. Click OK to save the image.

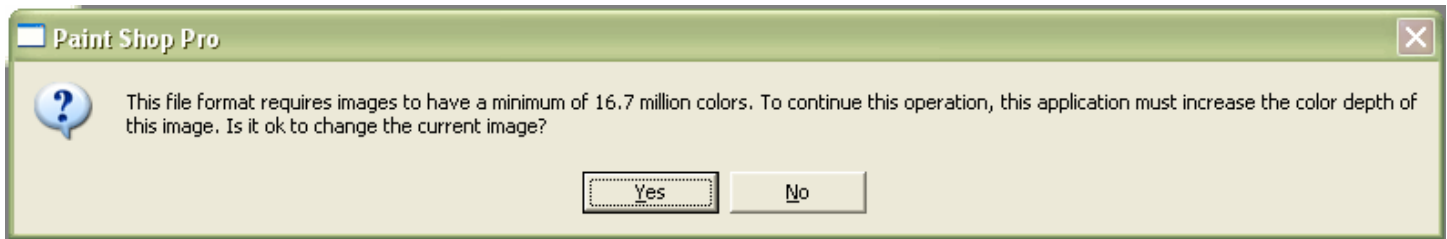


Figure 9 - If you see this message, click "Yes".

Convert the PPM file with Fuse Bead Image Converter

To convert the Portable Pixelmap (PPM) file to a Perler Beads pattern, use the Fuse Bead Image Converter program. You can load Fuse Bead Image Converter from your Windows Start menu, or run C:\Program Files\FuseBead\FBIC1.TBK.

Follow the instructions in the program to convert the image to a Fuse Bead Pattern (FBP) file. You will import the FBP file into your copy of Fuse Bead Pattern Designer.

After converting the PPM file to an FBP file, you can close Fuse Bead Image Converter.

Import the Image into Fuse Bead Pattern Designer

Open Fuse Bead Pattern Designer and use the Import Project command from the File menu to import your FBP file into the program.



Figure 10 - Santa as a Perler Beads pattern!

You can then continue to use Fuse Bead Pattern Designer to add and remove colors, print a color key, send the pattern to a friend (use the Export Project feature) and get started creating the design with Perler Beads!

Fuse Bead Color Key - Project No

Created with Fuse Bead Pattern Designer. <http://www.fusebeadsf.com>

-  (1)
-  Black (500)
-  Blush (1)
-  Brown (14)
-  Butterscotch (4)
-  Creme (17)
-  Dark Green (3)
-  Glitter Green (43)
-  Glitter Purple (17)
-  Glitter Red (27)
-  Glitter Silver (3)
-  Glow in the Dark Orange (16)
-  Gold (23)
-  Hot Coral (5)

Figure 11 - Print a color key and get started with your Perler Beads project!

Please write to info@fusebeadsoftware.com if you have any questions. We love hearing from customers and respond to every message.

Thank you for using software from Fuse Bead Software. We appreciate your support!